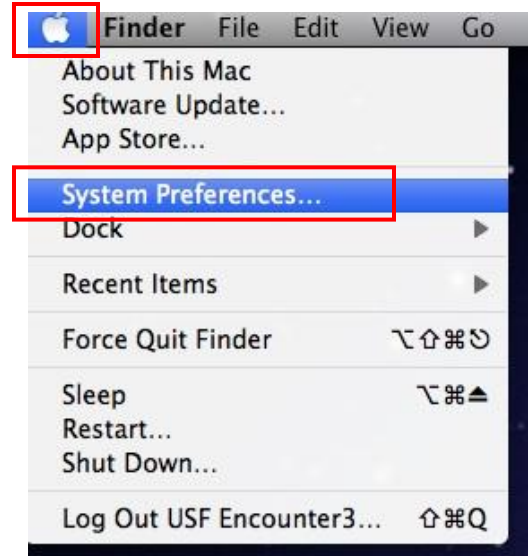


Connecting a Mobile Device to the University of St. Francis Network

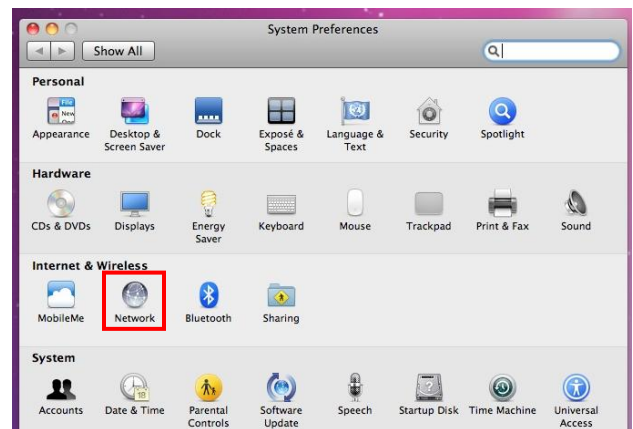


For the Mac OS10.6 (Snow Leopard)

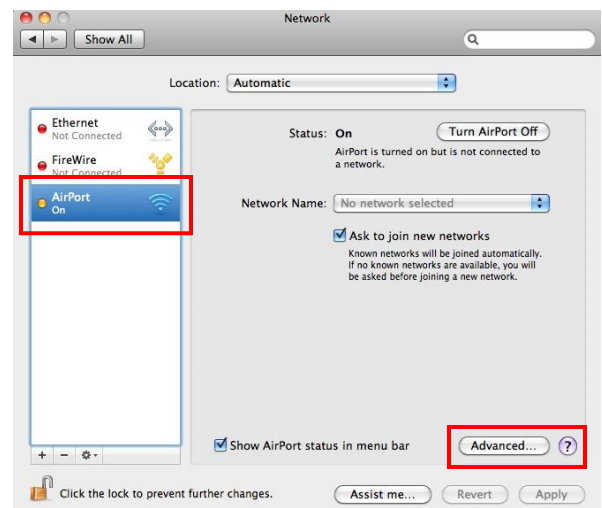
- ▶ Open **System Preferences** by selecting **Apple > System Preferences**



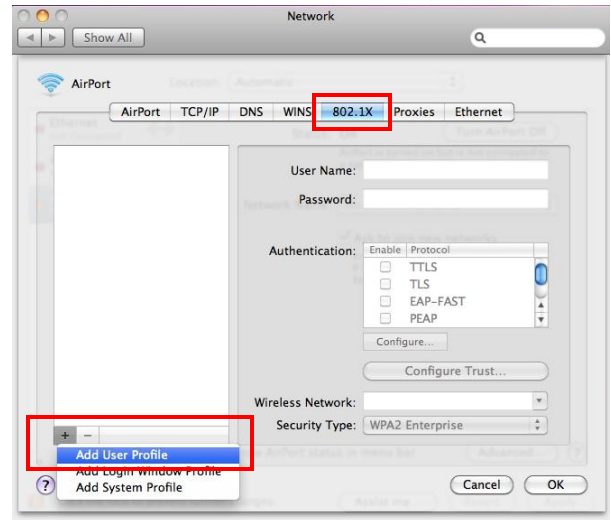
- ▶ Open the **Network** icon.



- ▶ Select **AirPort** from the left side of the window.
- ▶ Make sure your Airport card is turned on.
- ▶ Click the Advanced button to bring up the details on the airport card.



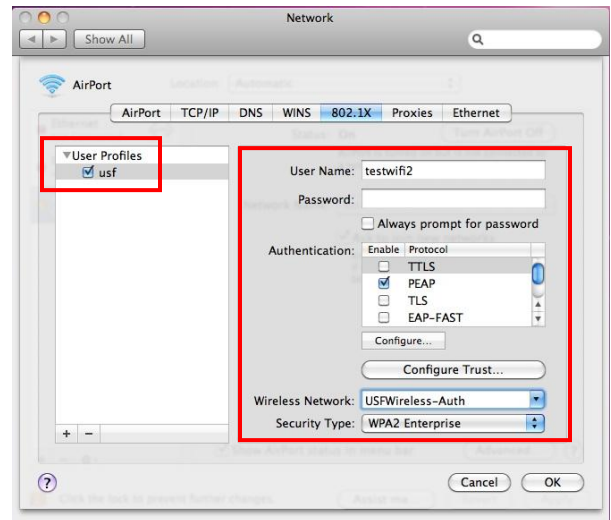
- ▶ Select the **802.1X** tab.
- ▶ Click the '+' at the bottom left.
- ▶ Select **Add User Profile**.



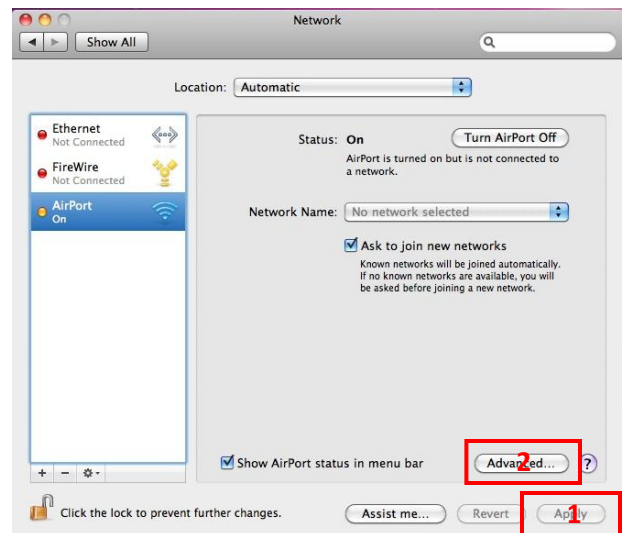
- ▶ Enter the following information for your user profile:

User Profile Name: usf
User Name: your usf username
Password: Leave blank
Authentication: check PEAP and uncheck all other options.
Wireless Network: USFWireless-Auth
 [Select from drop down menu]
Security Type: WPA2 Enterprise
 [Select from drop down menu]

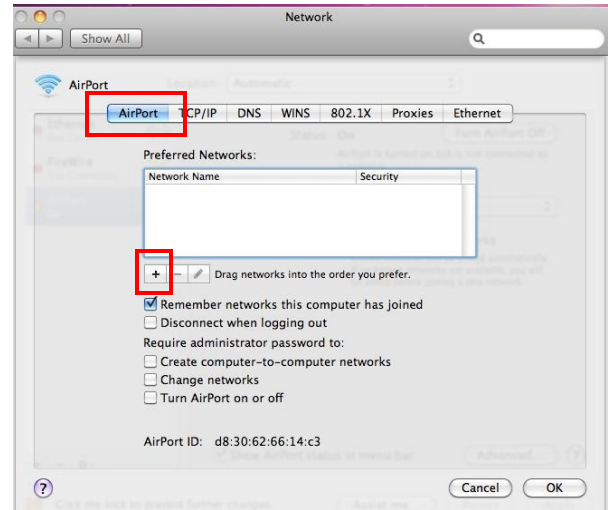
- ▶ Click **OK**.



- ▶ Click **Apply (1)**.
- ▶ Click **Advanced (2)**.



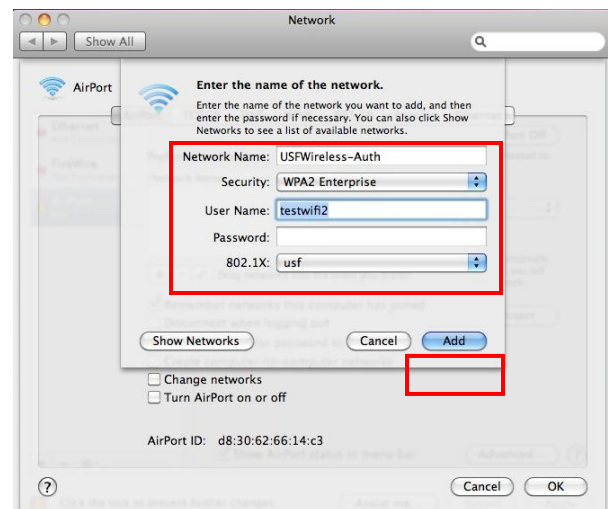
- ▶ Select the **Airport** tab.
- ▶ Click '+' to add a new preferred network.



- ▶ Enter the following information:

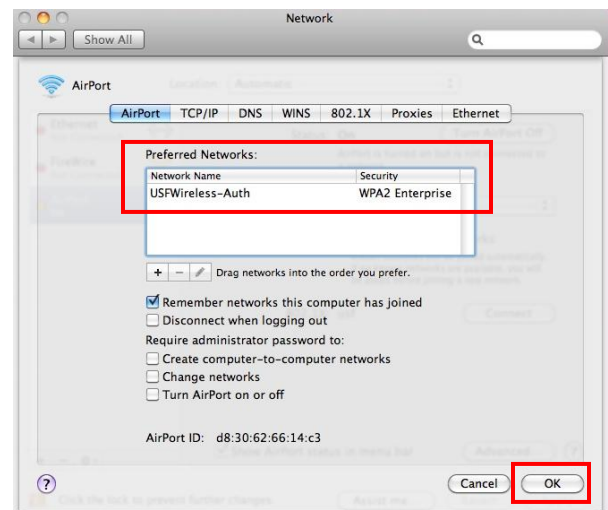
Network Name: USFWireless-Auth
 [case sensitive]
Security: WPA2 Enterprise
Username: your usf network username
Password: leave blank
802.1x : Select usf from the list.

- ▶ Click **Add**.

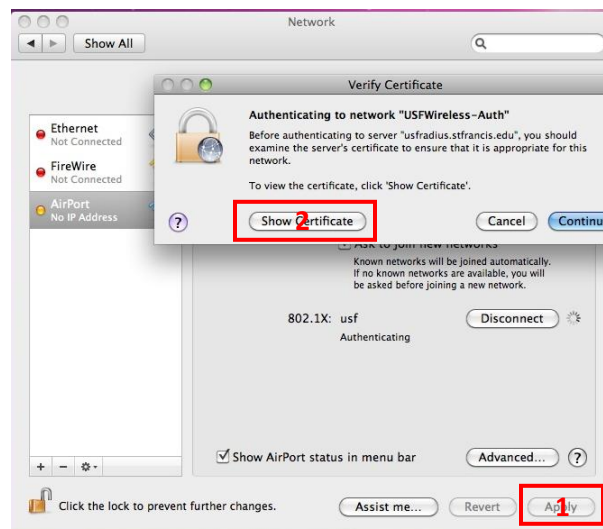


- ▶ Your connection should appear in the Preferred Networks list.

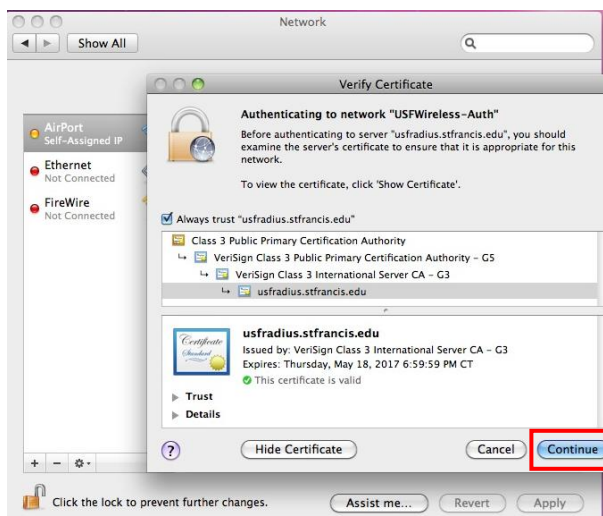
- ▶ Click **OK**.



- ▶ Click **Apply (1)**.
- ▶ Your MAC should now try to connect to the wireless network.
- ▶ Click **Show Certificate (2)** to verify that the security certificate is correct.

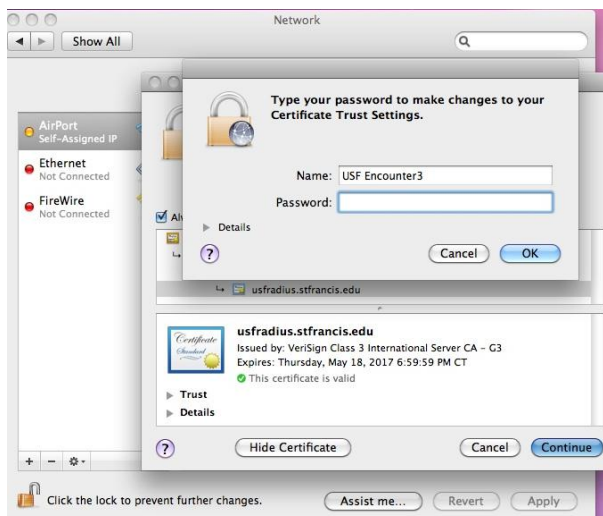


- ▶ Make sure the **server name** and **Issued by** match the screen shot (right).
- ▶ If so, click **Continue**.

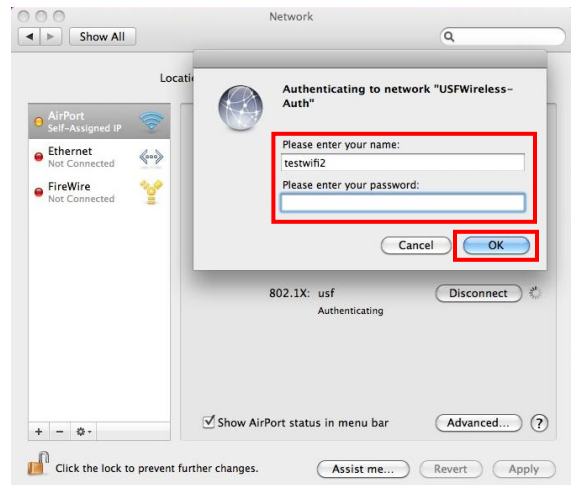


- ▶ Depending on the configuration of your machine, you may need to enter your local username and password to accept the certificate.

This is **NOT** your USF network ID and password. It is the username and password for your personal machine.



- ▶ Enter your **USF network username** and **password** [the same that you would use to sign in to MyUSF portal]
- ▶ Click **OK**.



- ▶ Wait for your account to authenticate.
- ▶ If everything was successful, your AirPort will turn **green** and show **connected**.
- ▶ Open your Internet browser to verify connectivity.

