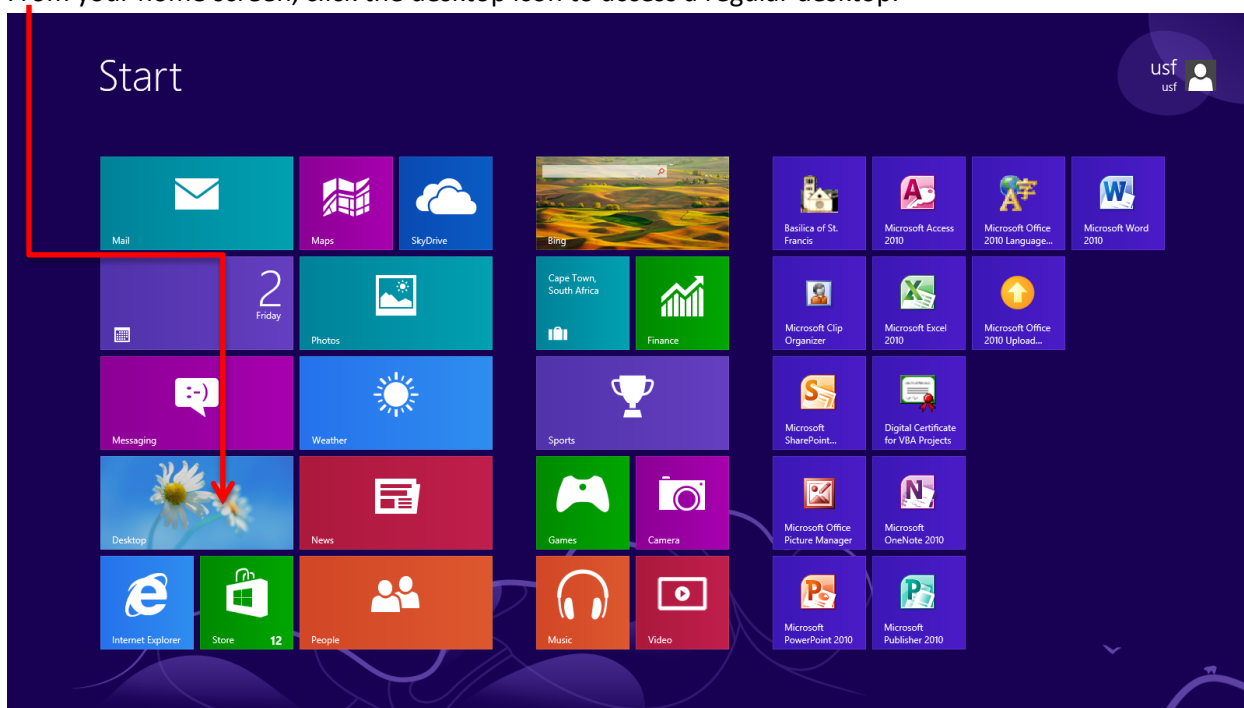


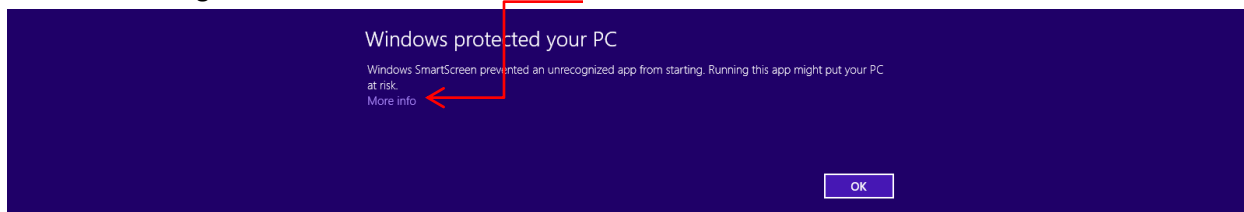
Windows 8 wireless configuration for USF

From your home screen, click the desktop icon to access a regular desktop.

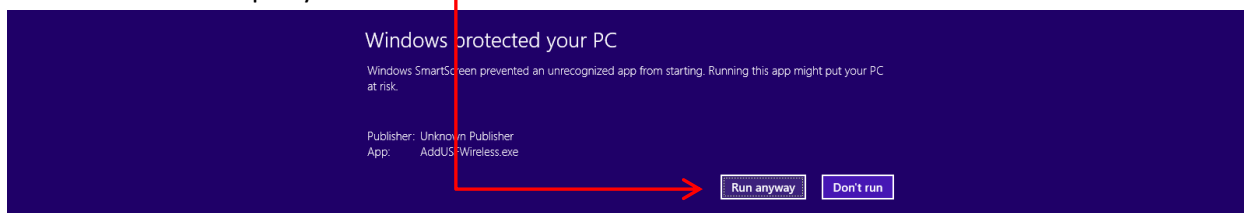


Connect to USFGuest wireless network. Make sure connect automatically is **unchecked**. Open your web browser if it does not open automatically. Read and accept the use policy. Use the following link to download the wireless configuration file: <http://doit.stfrancis.edu/AddUSFWireless.exe>

Save the configuration file to your desktop or download location. Double click to run the file. You may receive a message similar to below. Click the More Info button.



Then select **run anyway**. You are receiving this message because the file was created by the IT office and not a known 3rd party vendor.



Windows 8 wireless configuration for USF

Click Yes when prompted about connecting to USFWireless-Auth.



The configuration will be loaded into your computer. Go back and check your available wireless networks. You will probably still be connected to USFGuest. Click USFWireless-Auth and select connect automatically. Finally, click connect.



Enter your username and password when prompted. Click Ok to connect. Information will be saved and your computer should connect automatically in the future.

