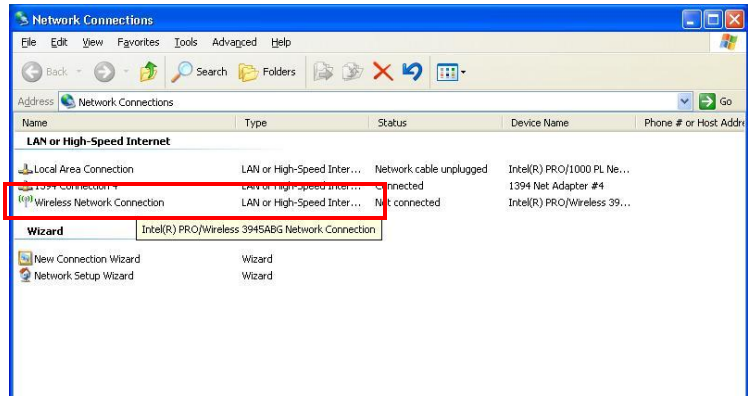


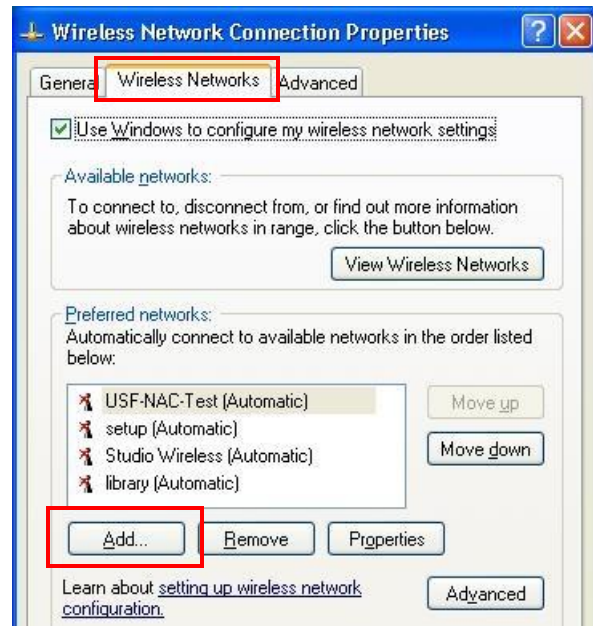
Connecting a Mobile Device to the University of St. Francis Network



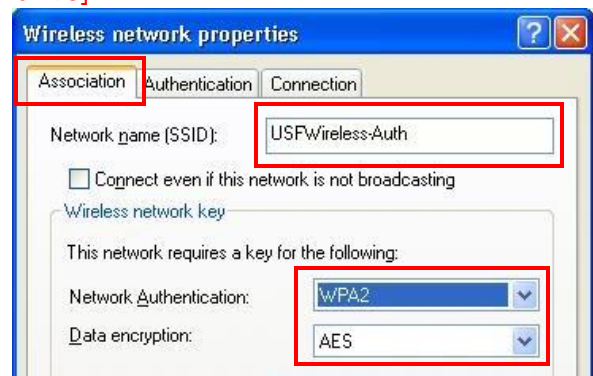
- ▶ On your desktop, right click on **My Network Places**.
- ▶ Select **Properties**.
- ▶ Locate your wireless network card, right click on it and select **Properties**.



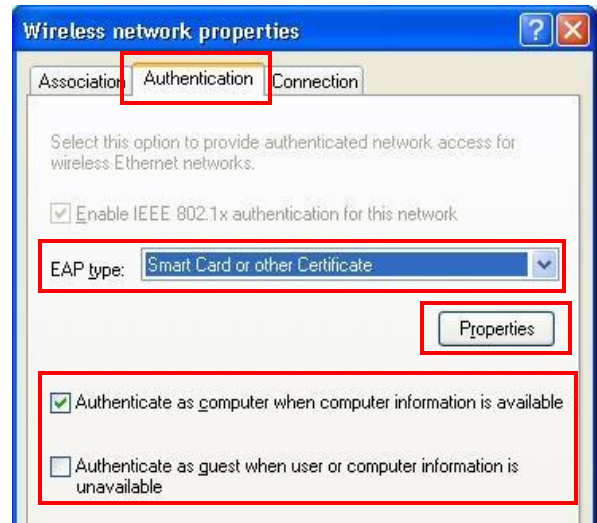
- ▶ Click the **Wireless Networks** tab.
- ▶ Click the **Add** button under Preferred networks.



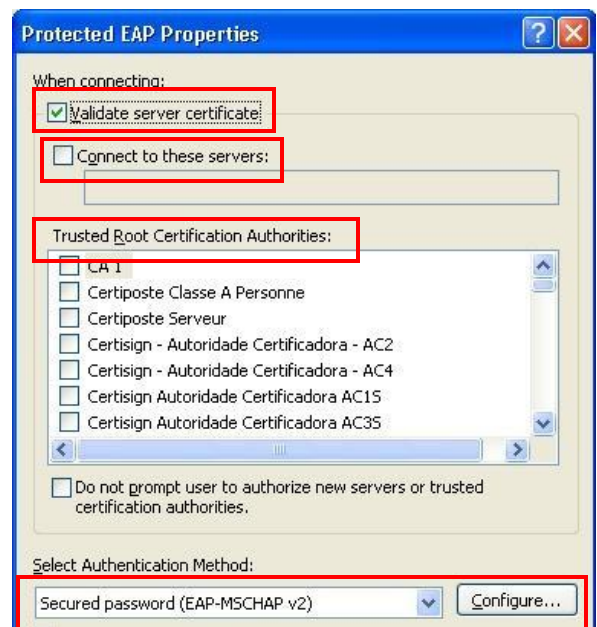
- ▶ Add the following information on the **Association** tab of the Wireless network properties.
Network name (SSID): USFWireless-Auth [case sensitive]
Network Authentication: WPA2
Data Encryption: AES



- ▶ Click the **Authentication** tab.
- ▶ Select **Protected EAP (PEAP)** for the EAP type.
- ▶ Uncheck **Authenticate as computer when computer information is available**.
- ▶ Uncheck **Authenticate as guest when user or computer information is unavailable**.
- ▶ Click **Properties**.



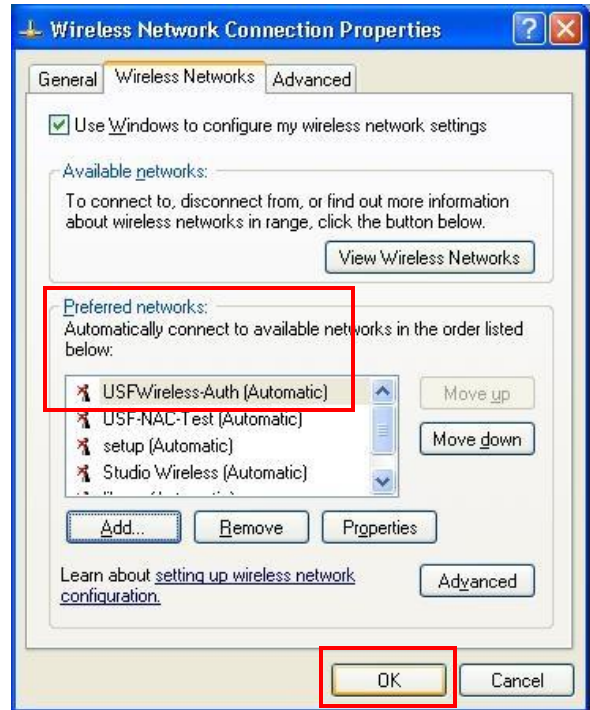
- ▶ Make sure **Validate Server Certificate** is checked.
- ▶ Uncheck **Connect to these servers**.
- ▶ Make sure nothing is checked in the **Trusted Root Certification Authorities**.
- ▶ Under the authentication method select **Secured password (EAP-MSCHAP v2)**.
- ▶ Click the **Configure** button.



- ▶ Uncheck **Automatically use my windows logon name and password**.
- ▶ Click **OK**.
- ▶ Click **OK** to close the properties window.
- ▶ Click **OK** again to return to the **Wireless Network Connection** properties window.



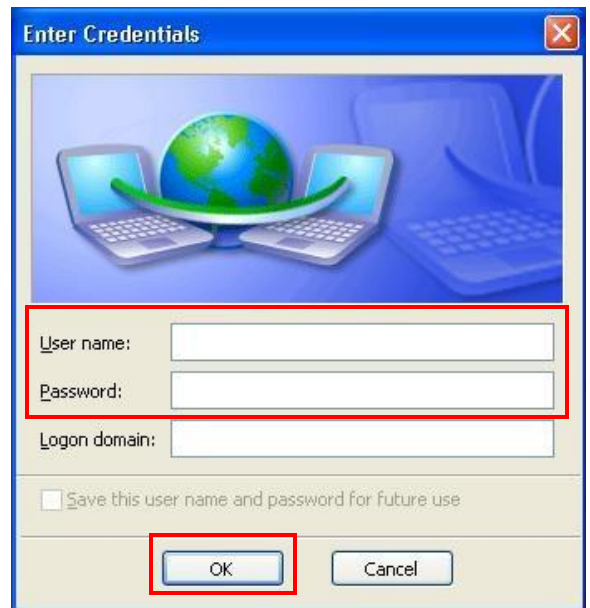
- ▶ You should now have **USFWireless-Auth** listed in your **Preferred networks**.
- ▶ Click **OK** to save your changes.



- ▶ A popup will appear in the lower right corner.
- ▶ Click the pop-up to start the logon process.



- ▶ Enter your University network **username and password**.
- ▶ Leave the **Logon domain** empty.
- ▶ Click **OK**.



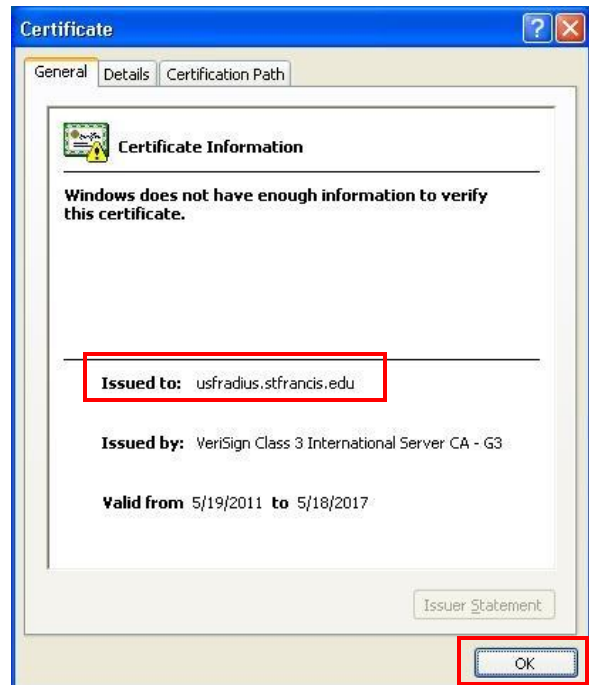
- ▶ Click the new popup window to view the security certificate and process logon information.



- ▶ Click **View Server Certificate**.



- ▶ Ensure the certificate was issued to **usfradius.stfrancis.edu**.
- ▶ Click **OK** to return to the previous screen.
- ▶ Click **OK** to accept the certificate.



If everything was successful, you should now be connected. Open your internet browser to ensure everything is working correctly.

These settings will be saved as a wireless profile - you will only have to complete this process once.